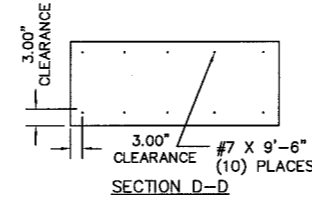
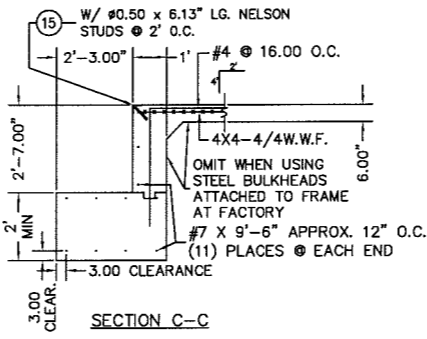
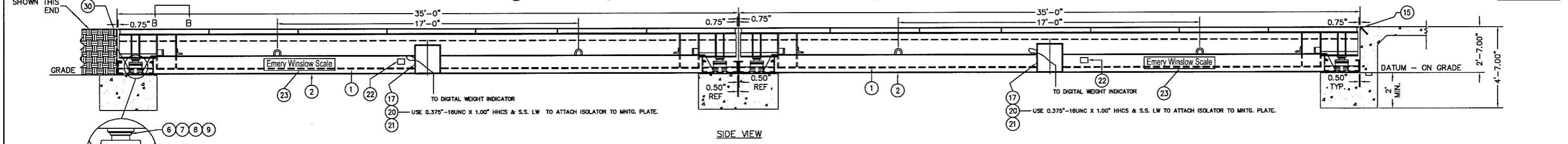
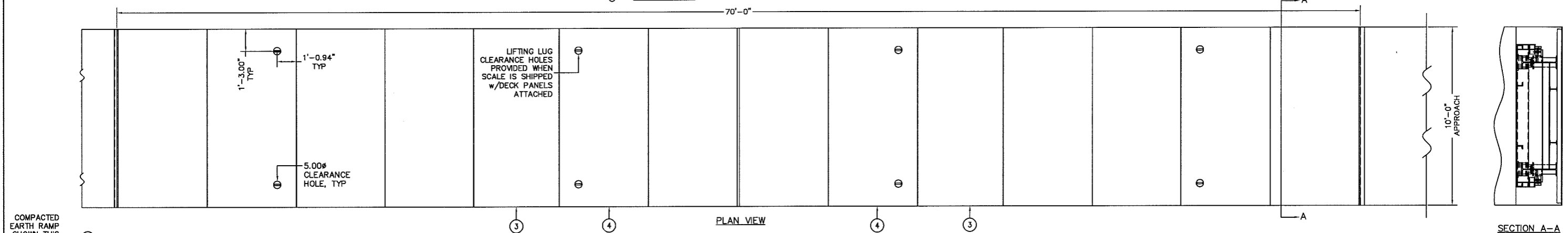


ITEM NO.	DESCRIPTION	QTY	MATERIAL	UNIT WT.	PART NO.	SIZE	WT.	ITEM NO.	DESCRIPTION	QTY	MATERIAL	UNIT WT.	PART NO.	SIZE	WT.
1	WEIGH BRIDGE	2	SEE ASS'Y	6974	A6153		13948	16	ANCHOR BOLT	8	CS ZN PL			#0.75" X 12.00" LONG OTHERS	
2	OUTSIDE FRAME	2	SEE ASS'Y	3476	A3511		7492	17	TOTALIZER ENCLOS. ASSY	2	CS		D-34384-7	20 X 16 X 10	
3	REMOVABLE PANEL	2	SEE ASS'Y	1152	A5533-XX		2304	18	OMIT	-					
4	FIXED PANEL	12	SEE ASS'Y	1199	A5510-XX		14388	19	OMIT	-					
5	LOAD CELL	8	SEE ASS'Y	65	D-29547	136-75-CH; NTEP NP. 88-239-P	520	20	HHCS	8	S.S.		B-34821-B	0.375"-16UNC X 0.88" CONN. ENCLOSURE TO ISOLATOR	
6	CENTERING RING	8	CS ZN PL		B-29871-E			21	WASHER	8	NYLON			#0.25 FOUR INTERNAL WASHERS NYLON	
7	SHIM	A/R	S.S.		A-29869-1			22	SERIAL NO. PLATE	2	SS			B-34821-B	
8	SHIM	A/R	S.S.		A-29869-2			23	EWSCO DECAL	4				A-35412	8.00 X 48.00
9	HEX HEAD CAP SCREW	32	CS			0.38-16UNC X 1.25		24	HYDRAULIC TUBING	A/R	COPPER				1/8" O.D.
10	HOLD-DOWN BOLT & NUT	8	CS			#1.00 X 3.50" LG.		25	NUT	16	S.S.			SWAGelok 202-1	
11	SHIPPING SPACER	8	CS	2.5	F985	1.00 X 3.00 X 3.00	20	26	FRONT FERRULE	16	S.S.			SWAGelok 203-1	
12	UPPER LOAD PLATE	8	ASTM A36	8	F839		64	27	BACK FERRULE	16	S.S.			SWAGelok 204-1	
13	LOWER BASE PLATE	8	ASTM A36	34	F911		272	28	HEX HEAD CAP SCREW	32	S.S.				0.50-13UNC X 1.25" LONG
14	CLAMP	32	CS ZN PL		A-29870			29	FLAT WASHER	64	S.S.				#0.50 --- (2) PER L/C CLAMP
15	END COPING	2	ASTM A36			0.25 X 3.000 X 3.00 ANGLE	BY OTHERS	30	BULKHEAD	2	ASTM A36				OPTIONALLY SUPPLIED BY EWSCO

ITEMS ABOVE ARE FACTORY INSTALLED, EXCEPT FOR ITEMS 15 & 16.



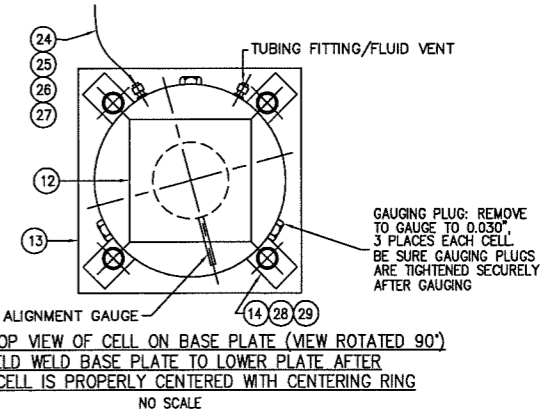
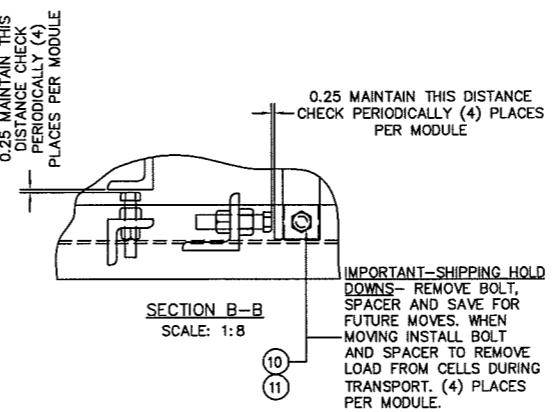
REFERENCE DRAWINGS:  
 A5566 DECK PANEL INSTALLATION (WELDING REQ'D)  
 D342 APPROACH PLAN (ALTERNATE)  
 D-34384-7 TOTALIZER ENCLOSURE ASSEMBLY  
 DUAL TANDEM AXLE CAPACITY 45,000 LB.  
 MAXIMUM PIER LOADING IS 40,000 LB AT EACH LOAD CELL.



For Reference Only  
Do Not Use For Construction

NOTES:  
 EMERY WINSLOW SCALE COMPANY WILL OPERATE PROPERLY WHEN INSTALLED IN ACCORD WITH OUR STANDARD SPECIFICATIONS. HOWEVER, THE PURCHASER IS CAUTIONED TO CHECK WITH THE PROPER REGULATORY AUTHORITIES AS TO ANY SPECIAL STATE OR OTHER REGULATORY REQUIREMENTS REGARDING FOOTING DEPTHS, CONSTRUCTIONS & APPROACHES WHICH MIGHT AFFECT DIMENSIONS SHOWN.  
 SCALE SHALL BE INSTALLED AT AN ELEVATION TO INSURE ADEQUATE DRAINAGE AWAY FROM SCALE.  
 FOOTINGS SHALL EXTEND TO A DEPTH NOT LESS THAN THE LOCAL FROST LINE. FOOTINGS SHOWN ARE RECOMMENDED FOR 4000 P.S.F. THE INSTALLER SHALL NOTIFY THE OWNER. THE OWNER SHALL THEN ARRANGE FOR DESIGN MODIFICATIONS TO SUIT THE INSTALLATION.  
 CONCRETE AND REINFORCING SHALL BE IN ACCORD WITH THE SPECIFICATIONS OF THE AMERICAN CONCRETE INSTITUTE HANDBOOK #318-77. CONCRETE COMPRESSIVE STRENGTH TO BE 3000 P.S.I. ON UNDISTURBED SOIL.  
 ON THE APPROACH END OR ENDS OF A VEHICLE SCALE INSTALLED IN ANY ONE LOCATION FOR A PERIOD OF SIX MONTHS OR MORE, THERE SHALL BE A STRAIGHT APPROACH AS FOLLOWS.

APPROACH COPING SHALL BE STRUCTURAL STEEL ANGLE, 0.25 X 3.00 X 3.00 WITH WELDED CONCRETE ANCHORS ON 2' CENTERS, MINIMUM. IT IS RECOMMENDED THAT THE OWNER ARRANGE TO HAVE FABRIC IMPREGNATED BELTING (OR SIMILAR DURABLE MATERIAL) INSTALLED, TO COVER THE GAP BETWEEN THE APPROACH COPING AND THE SCALE, TO MINIMIZE DEBRIS ENTERING SCALE.  
 DEAD LOAD PRESSURE AT EACH CELL = APPROX. 93 P.S.I. AFTER INSTALLING SCALE ON CONCRETE PIERS, CHECK PRESSURES ON TOTALIZER CELLS USING PRESSURE GAUGE. PRESSURE ON EACH CELL SHOULD BE APPROX. 93 P.S.I. IF PRESSURES ARE NOT ALIKE ON ALL CELLS OF EACH MODULE, SHIM AS REQUIRED TO CORRECT.  
 PRESSURE GAUGE IS LOCATED ON EACH TOTALIZER IN ENCLOSURE ON EACH MODULE.  
 CONNECT EACH TOTALIZER DIRECTLY TO A TWO-CHANNEL DIGITA WEIGHT INDICATOR. USE TERMINAL STRIPS INSIDE ENCLOSURE FOR CONNECTIONS. INDICATOR AND STRAIN GAGE CABLE OPTIONALLY SUPPLIED BY EWSCO.



A. AT LEAST THE WIDTH OF THE PLATFORM, AND  
 B. AT LEAST ONE-HALF THE LENGTH OF THE PLATFORM BUT NOT REQUIRED TO BE MORE THAN 40 FEET, AND  
 C. NOT LESS THAN 10 FEET OF ANY APPROACH ADJACENT TO THE PLATFORM SHALL BE CONSTRUCTED OF CONCRETE OR SIMILAR DURABLE MATERIAL TO INSURE THAT THIS PORTION REMAINS SMOOTH AND LEVEL AND IN THE SAME PLANE AS THE PLATFORM. HOWEVER, GRATING OF SUFFICIENT STRENGTH TO WITHSTAND ALL LOADS MAY BE INSTALLED IN THIS PORTION, AND FURTHER WHERE DEEMED NECESSARY FOR DRAINAGE PURPOSES, THE REMAINING PORTION OF THE APPROACH MAY SLOPE SLIGHTLY.

ALWAYS USE SPREADER BARS ON SLINGS/CHAINS WHEN LIFTING MODULES.

ALL SHARP CORNERS AND EDGES TO BE BROKEN				EMERY WINSLOW SCALE COMPANY SEYMOUR, CT U.S.A. TERRE HAUTE, IN.	
UNLESS OTHERWISE SPECIFIED DIMENSIONS ARE IN INCHES					
MACHINING		FABRICATION		MODEL 54-7570-10	
±.005		±.01		75 TON 70' X 10' PORTAWEIGH II	
±.01		±.02		OUTLINE ARRGT., 3/8" S.D.	
THIS DRAWING IS THE PROPERTY OF EMERY WINSLOW SCALE COMPANY. SEMOUR, CONNECTICUT. THE INFORMATION CONTAINED HEREIN IS CONFIDENTIAL AND IS NOT TO BE USED OR DISSEMINATED TO OTHERS WITHOUT THE EXPRESS WRITTEN CONSENT OF EMERY WINSLOW SCALE COMPANY.				DRAWN CES DATE 01/14/02	
CHECKED DATE				SCALE 1:32	
ACAD FILENAME: T00796				FIRST USED ON DRAWING NO. A3510	
LAYERS USED: ALL				MADE FROM D-70657	
				REV.	