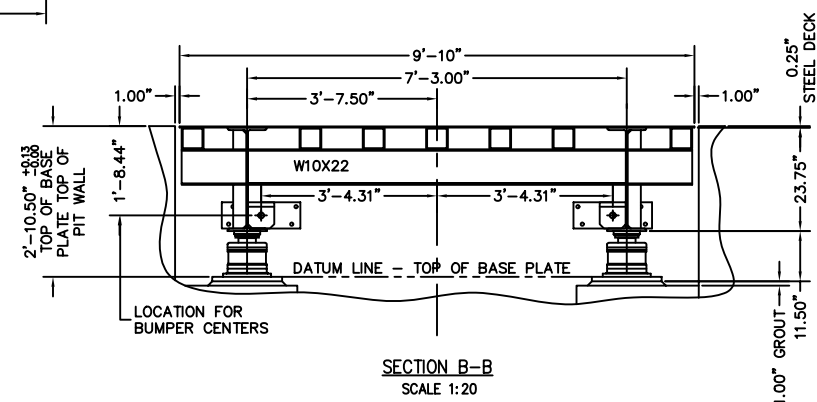
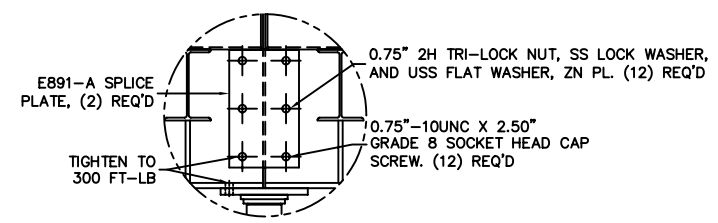
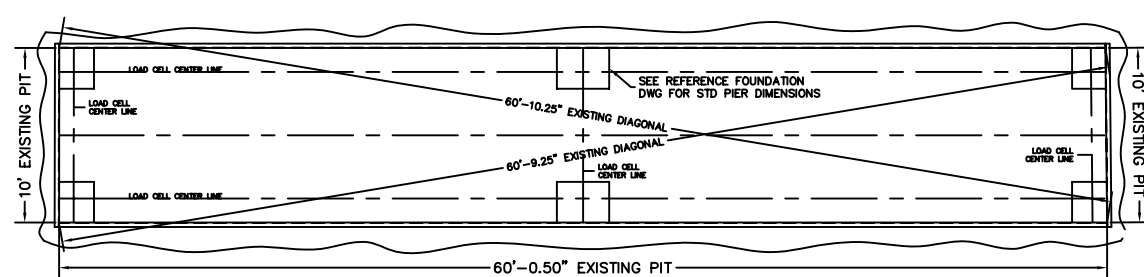
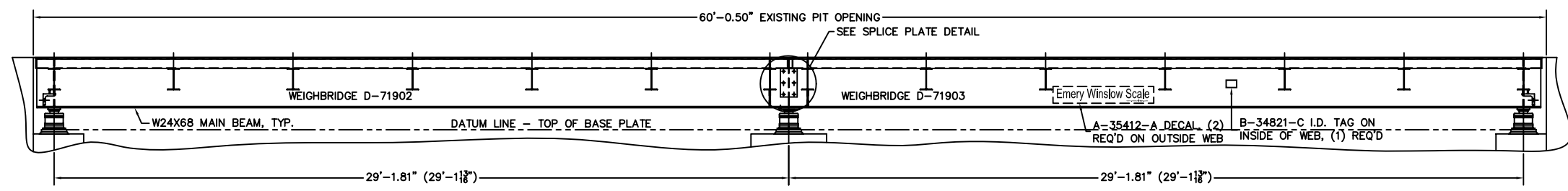
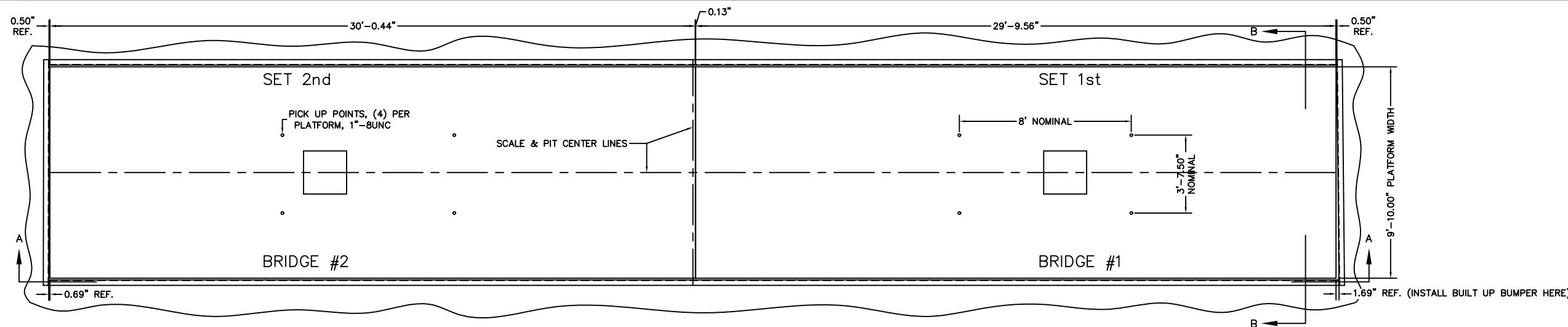


PRELIMINARY NOT FOR CONSTRUCTION



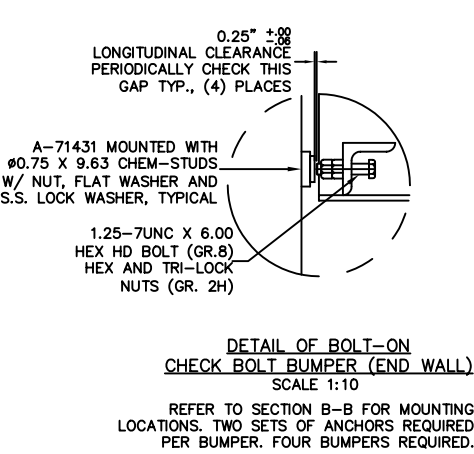
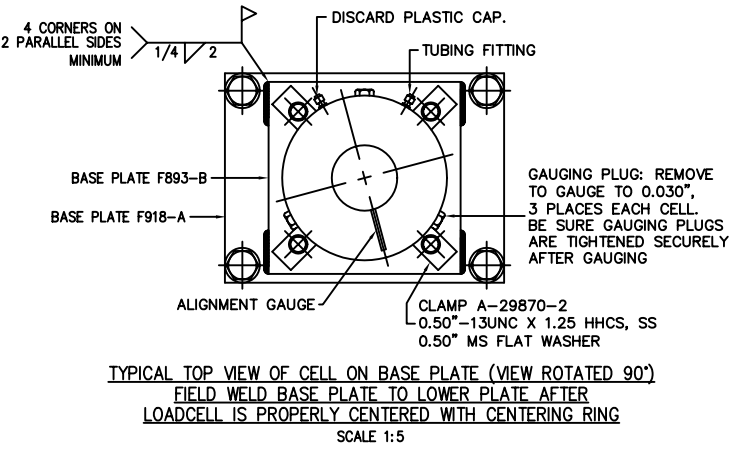
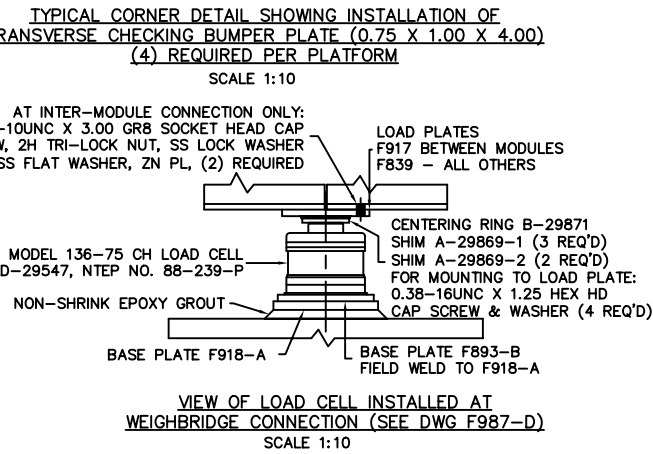
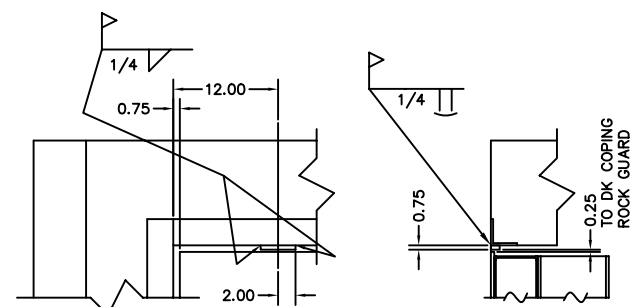
- NOTES:**
- REFERENCE INFORMATION:

REF. FOUNDATION PLAN	D-71904
PIPING DIAGRAM (3 SECTION)	B-33069-1-G
APPROACH	D342-1
LOAD CELL INSTALLATION INSTR.	F987-D
NTEP NUMBER	92-086PA2
CLC	50,000
LOADING AT EACH LOAD CELL	50,000 LB
 - CRANE CAPACITY & INSTALLATION NOTES:

THE MINIMUM CAPACITY IS 12,600 LB, LARGEST PIECE APPROXIMATELY 30' X 10' X 2' INSTALL THE BRIDGES IN THE ORDER SHOWN IN THE PLAN VIEW. THE FIRST BRIDGE IS #1 & HAS (4) LOAD PLATES WITH SHIM AND CENTERING RINGS ATTACHED. THESE (4) LOAD PLATES WOULD REST ATOP THE (4) LOAD CELLS IN THE TWO SECTIONS THAT SUPPORT BRIDGE #1. PICK UPS ARE IN TOP OF DECK.
 - FOR COMMERCIAL SCALES CHECK WITH LOCAL WEIGHTS AND MEASURES OFFICIALS BEFORE STARTING CONSTRUCTION. NATIONAL BUREAU OF STANDARDS HANDBOOK 44 REQUIRES:

A.) A STRAIGHT APPROACH OF AT LEAST ONE-HALF THE LENGTH OF THE PLATFORM.
 B.) NOT LESS THAN 10 FEET OF APPROACH ADJACENT TO THE PLATFORM TO BE CONSTRUCTED OF CONCRETE OR SIMILAR DURABLE MATERIAL AND BE LEVEL AND IN THE SAME PLANE AS THE PLATFORM.

FOR NON COMMERCIAL SCALES PROVIDE AN APPROACH OF 2 FEET MINIMUM LENGTH WHICH IS LEVEL AND IN THE SAME PLANE AS THE PLATFORM.
 - CHECK WITH THE PROPER REGULATORY AUTHORITIES AS TO ANY SPECIAL STATE OR OTHER REGULATORY REQUIREMENTS REGARDING PIT DEPTHS. PIT CONSTRUCTION AND APPROACH DIMENSIONS WHICH MIGHT AFFECT INSTALLATION ARE SHOWN. EMERY WINSLOW WILL ASSUME NO RESPONSIBILITY FOR CHANGES NECESSITATED BY ANY STATE OR ANY OTHER REGULATORY REQUIREMENTS AS TO INSTALLATION OF OUR SCALES.



ALL SHARP CORNERS AND EDGES TO BE BROKEN				EMERY WINSLOW SCALE COMPANY SEYMOUR, CT U.S.A. TERRE HAUTE, IN.	
UNLESS OTHERWISE SPECIFIED DIMENSIONS ARE IN INCHES				MODEL 43-7560-10-X, 1/4\"/>	
MACHINING		FABRICATION		75 TON, NOMINAL 60' X 10' PREPARED FOR EXISTING FOUNDATION	
± .005		± .13		SCALE FIRST USED ON DRAWING NO.	
DRAWN		DATE		REV.	
09/30/05		09/30/05		D-71901	
ACAD FILENAME: T02038		LAYERS USED: ALL		1:30	