

FOR NON COMMERCIAL SCALES PROVIDE AN APPROACH OF 2 FEET MINIMUM LENGTH WHICH IS LEVEL AND IN SAME PLANE AS THE PLATFORM.

FOR COMMERCIAL SCALES CHECK WITH LOCAL WEIGHTS AND MEASURES OFFICIALS BEFORE STARTING CONSTRUCTIONS. NATIONAL INSTITUTE OF STANDARDS AND TECHNOLOGY (NIST) HANDBOOK 44 REQUIRES:

A.) A STRAIGHT APPROACH OF AT LEAST ONE-HALF THE LENGTH OF THE PLATFORM.

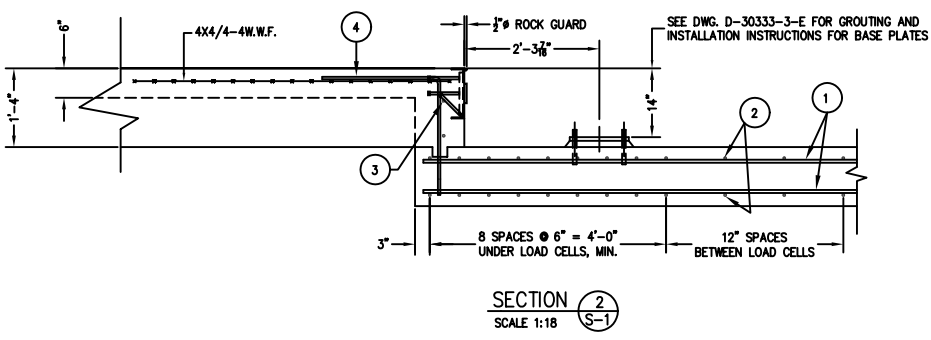
B.) NOT LESS THAN 10 FEET OF APPROACH ADJACENT TO THE PLATFORM TO BE CONSTRUCTED OF CONCRETE OR SIMILAR DURABLE MATERIAL AND BE LEVEL AND IN THE SAME PLANE AS THE PLATFORM.

NOTES:

1. CONCRETE STRENGTH: 4,000 PSI @ 28 DAYS
2. REINFORCING ROD: GRADE 60, 60,000 PSI, ASTM A615
3. SOIL BEARING IS ASSUMED TO BE 2,000 LBS/SQ FT. TO BE VERIFIED IN THE FIELD.
4. SLAB TO BE FLAT WITHIN 1/4\"
5. APPROACH COPING (BULKHEAD) TO BE ON A COMMON PLANE WITHIN 1/4\"
6. TOP OF REBAR MUST BE PLACED TO CLEAR THE ANCHOR BOLTS.
7. ANCHOR BOLTS ARE TO BE INSTALLED AFTER FOUNDATION HAS CURED.
8. SEE SPEC. A499-364-2 FOR ON SITE SUBSURFACE CONDITIONS.
9. THE LENGTH FOR REBAR NO. 1 IS MINIMUM FOR 114 PIECES LAPPED. LONGER LAPS AND/OR PIECES MAY BE USED. MINIMUM LAP IS 26\"

REFERENCE DRAWINGS:

- D-70461-C OUTLINE ARRANGEMENT
- B-29932-C ANCHOR BOLT INSTALLATION
- C-29900-2-F BULKHEAD DETAIL



MATERIAL REQUIREMENTS		TOTAL WT. OF REBAR		5958
CONCRETE:				
APPROACHES	7 CU. YDS	4	24	64
FOUNDATION	37 CU. YDS	3	4	48
REINFORCING:		2	204	2447
REBAR	5958 LB	1	114	3399
4X4/4-4W.W.F.	240 SQ FT			
PIECE NO.	BAR SIZE	QTY	LENGTH & DESCRIPTION	WT.

ALL SHARP CORNERS AND EDGES TO BE BROKEN		EMERY WINSLOW SCALE COMPANY	
SEYMOUR, CT U.S.A. TERRE HAUTE, IN.		FOUNDATION PLAN 80' X 11'	
MODEL 95-10080-11		SLAB CONSTRUCTION	
SCALE 1:36	FIRST USED ON D-70462	DRAWING NO. D-70462	REV. B

FULL SIZE PLOT D-24X36