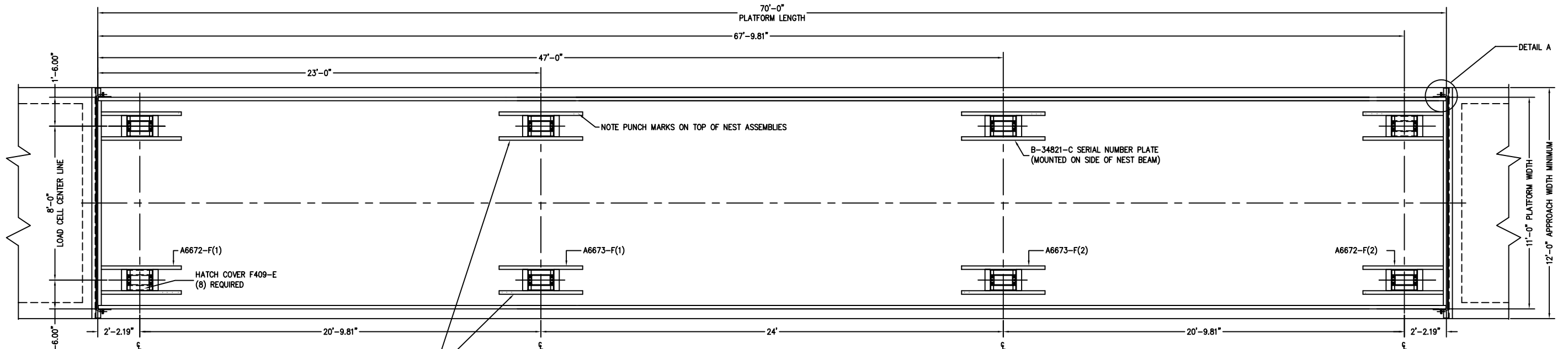
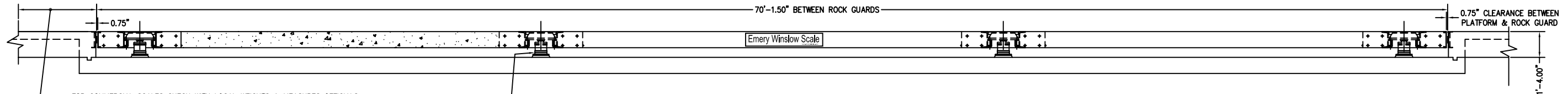


PRELIMINARY NOT FOR CONSTRUCTION

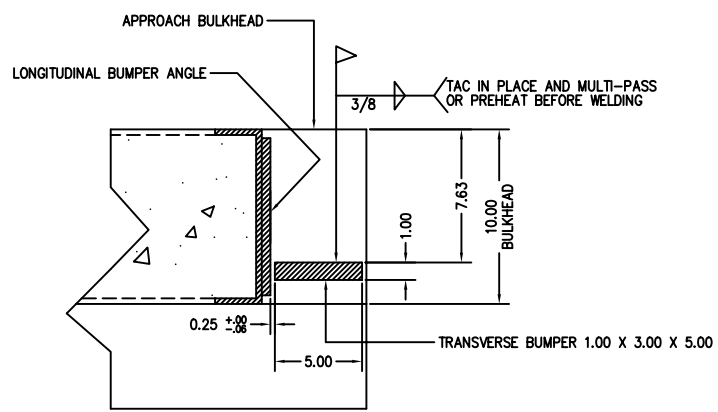


NOTE: BEFORE POURING CONCRETE FOR PLATFORM BE SURE THAT THE TOP OF THE NEST ASSEMBLIES ARE IN THE SAME PLANE AS THE SIDE CHANNELS. SOME SHIMMING UNDER THE NEST ASSEMBLIES MAY BE REQUIRED.

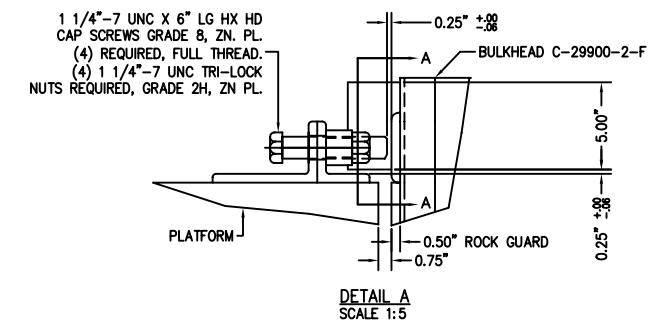


FOR COMMERCIAL SCALES CHECK WITH LOCAL WEIGHTS & MEASURES OFFICIALS BEFORE STARTING CONSTRUCTION. NATIONAL INSTITUTE OF STANDARDS & TECHNOLOGY (NIST) HANDBOOK 44 REQUIRES:
A STRAIGHT APPROACH OF AT LEAST ONE-HALF THE LENGTH OF THE PLATFORM. NOT LESS THAN 10 FEET OF APPROACH ADJACENT TO THE PLATFORM TO BE LEVEL AND IN THE SAME PLANE AS THE PLATFORM.

136-75CH LOAD CELL
QTY (8) REQUIRED
NIST CERTIFICATE NO. 88-239



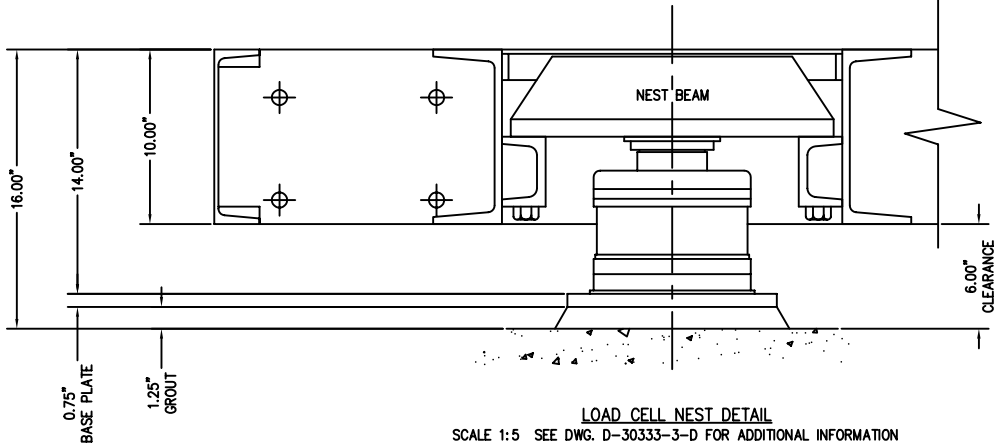
SECTION A-A FROM DETAIL A
SCALE 1:5 ROTATED 90°
STRIKERPLATE & CHECK BOLT NOT SHOWN. TYPICAL AT FOUR CORNERS.



DETAIL A
SCALE 1:5

- REFERENCE DRAWINGS:**
- 1. SLAB FOUNDATION D-70145-E
 - 2. FOOTING FOUNDATION D-70146-D
 - 3. SCALE PLATFORM ASSEMBLY A6671,1-13
 - 4. NEST ASSEMBLY DETAIL D-30333-3-D
 - 5. ANCHOR BOLT INSTALLATION B-29932-C
 - 6. LOAD CELL INSTALLATION AND ALIGNMENT F987-D
 - 7. REBAR SCHEDULE FOR DECK A-70382-C
 - 8. TUBING DIAGRAM B-33069-G
 - 9. SERIES 9000 INSTRUCTION MANUAL A499-417

- REFERENCE INFORMATION:**
- 1. CONCRETE REQUIRED TO POUR PLATFORM IS 24 CUBIC YARDS (MINIMUM CONCRETE STRENGTH IS 5,000 PSI AT 28 DAYS)
NTEP #89-014P CLC = 58,000



LOAD CELL NEST DETAIL
SCALE 1:5 SEE DWG. D-30333-3-D FOR ADDITIONAL INFORMATION

REV	DESCRIPTION	DATE	BY
E	REVISIONS UPDATED	06/05	CEM
D	REVISIONS UPDATED	07/04	CEM
C	DETAIL A WAS DETAIL X	06/02	CES
B	APPROACH & REV. UPDATE	09/00	CES
A	DETAILS REVISED & TEXT UPDATED	11/99	CES
LTR	REVISION	DATE	CES

ALL SHARP CORNERS AND EDGES TO BE BROKEN UNLESS OTHERWISE SPECIFIED DIMENSIONS ARE IN INCHES MACHINING FABRICATION .00 ±.01 ±.13 .02 ±.05 ±.13 .03 ±.05 ±.13		FULL SIZE PLOT D-24X36 EMERY WINSLOW SCALE COMPANY SEYMOUR, CT U.S.A TERRE HAUTE, IN. ASSEMBLY LAYOUT MODEL 94-10070 70' X 11' 10" CONCRETE DECK
THIS DRAWING IS THE PROPERTY OF EMERY WINSLOW SCALE COMPANY, SEYMOUR, CONNECTICUT. THE INFORMATION CONTAINED HEREIN IS CONFIDENTIAL AND IS NOT TO BE USED OR DISSEMINATED TO OTHERS WITHOUT THE EXPRESS WRITTEN CONSENT OF EMERY WINSLOW SCALE COMPANY.	DRAWN CES DATE 9/14/98 CHECKED DATE ACAD FILENAME: T00292 LAYERS USED: ALL	SCALE 1:30 FIRST USED ON D-70144 REV. E