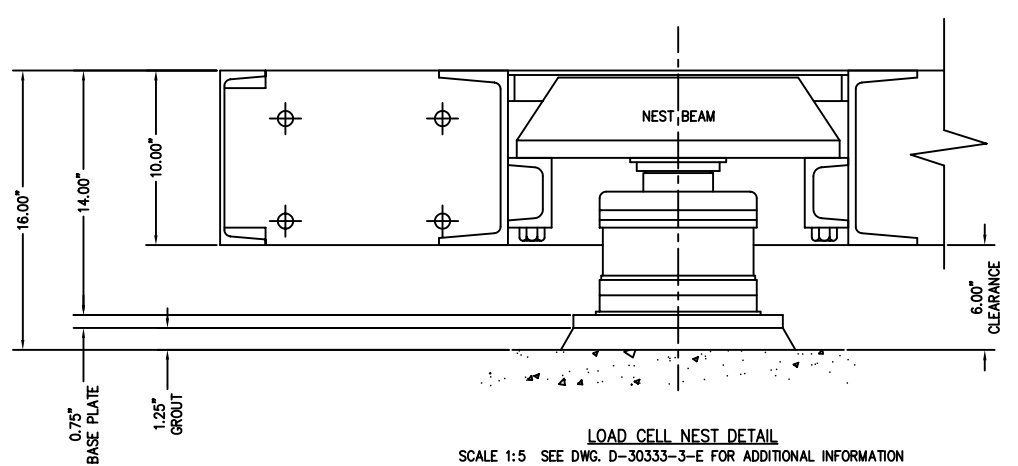
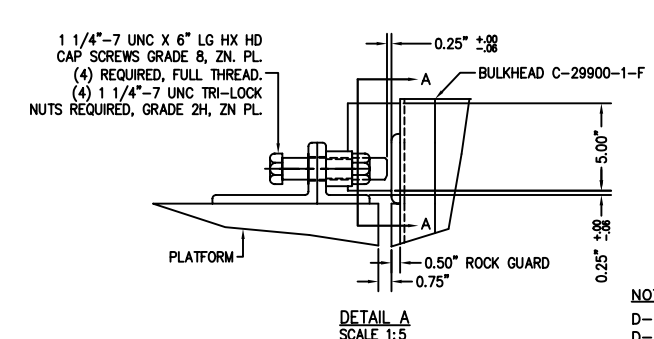
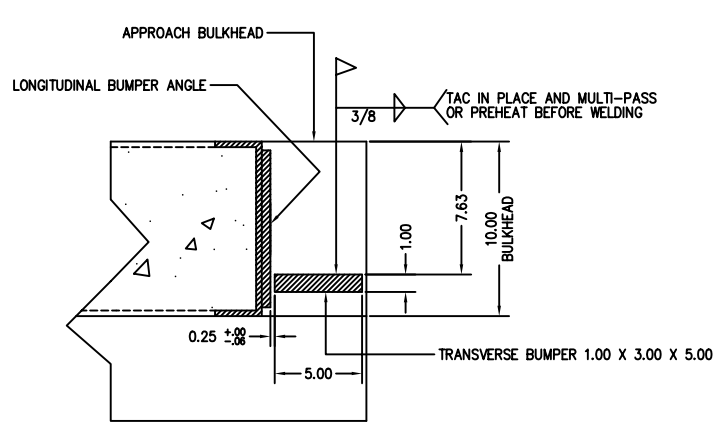
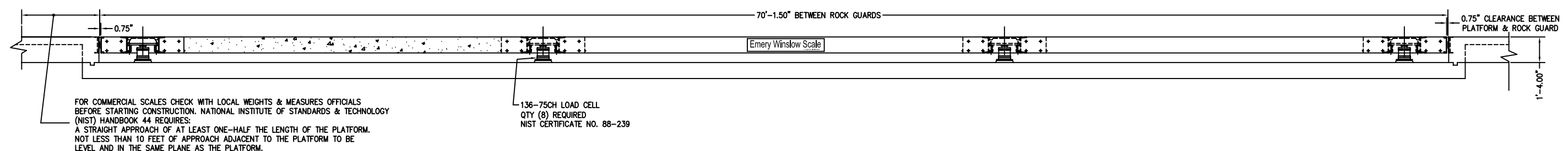
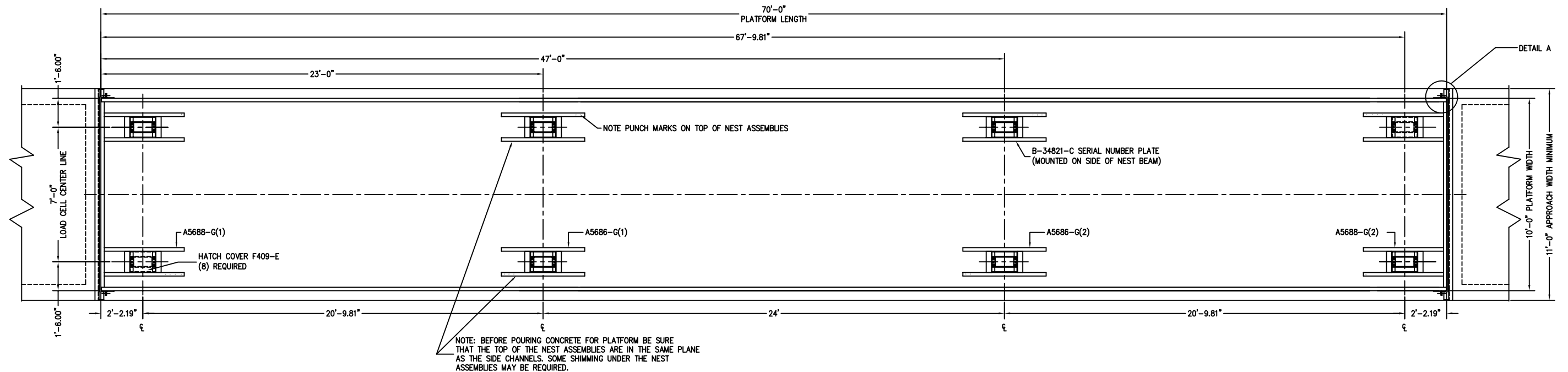


PRELIMINARY NOT FOR CONSTRUCTION



- NOTES:**
- D-A3994-F SLAB FOUNDATION
 - D-A3162-E FOOTING FOUNDATION
 - A6383-1/13 SCALE PLATFORM ASSY. & INSTAL. INSTR.
 - D-30333-3-E NEST ASSEMBLY DETAIL
 - B-29932-C ANCHOR BOLT INSTALLATION
 - F987-D LOAD CELL INSTALLATION & ALIGNMENT
 - B-30740-2 HYDRAULIC JACK POSITIONS & SEQUENCES
 - B-33069-G TUBING DIAGRAM
 - B-30752-4 TARE PRESSURE & GAUGING REPORT
 - SERIES 9000 INSTRUCTION MANUAL
 - NTEP #89-014P
 - CLC = 58,000 LB
1. CONCRETE REQUIRED TO POUR PLATFORM IS 22 CUBIC YARDS. (MINIMUM CONCRETE STRENGTH IS 5,000 PSI AT 28 DAYS.)

REV	REVISIONS UPDATED	DATE	BY
I	REVISIONS UPDATED	07/05	CEM
H	REVISIONS UPDATED	06/04	CEM
G	REVISIONS UPDATED	05/02	CEM
F	DETAIL ADDED & REV'S UPDATED	02/02	CEM
E	COMPLETE UPDATE	12/01	CEM
D	TEXT CORRECTIONS	8/00	CEM
C	DWG REV'S UPDATED	3/00	CEM
B	DETAIL UPDATED & TEXT CHANGE	11/99	CEM
A	DIM CORRECTED TO SCALE	7/98	CEM
LTR	REVISION	DATE	BY

ALL SHARP CORNERS AND EDGES TO BE BROKEN UNLESS OTHERWISE SPECIFIED DIMENSIONS ARE IN INCHES MACHINING FABRICATION ±.002 ±.005 ±.13

FULL SIZE PLOT D-24X36

EMERY WINSLOW SCALE COMPANY
SEYMOUR, CT U.S.A. TERRE HAUTE, IN.

ASSEMBLY LAYOUT
MODEL 94-10070 70' X 10'
10" CONCRETE DECK

THIS DRAWING IS THE PROPERTY OF EMERY WINSLOW SCALE COMPANY, SEYMOUR, CONNECTICUT. THE INFORMATION CONTAINED HEREIN IS CONFIDENTIAL AND IS NOT TO BE USED OR DISSEMINATED TO OTHERS WITHOUT THE EXPRESS WRITTEN CONSENT OF EMERY WINSLOW SCALE COMPANY.

DRAWN J P DATE 5/15/96
CHECKED DATE
ACAD FILENAME: A3161
LAYERS USED: ALL

SCALE	FIRST USED ON	DRAWING NO.	REV.
1:30		D-A3161	1