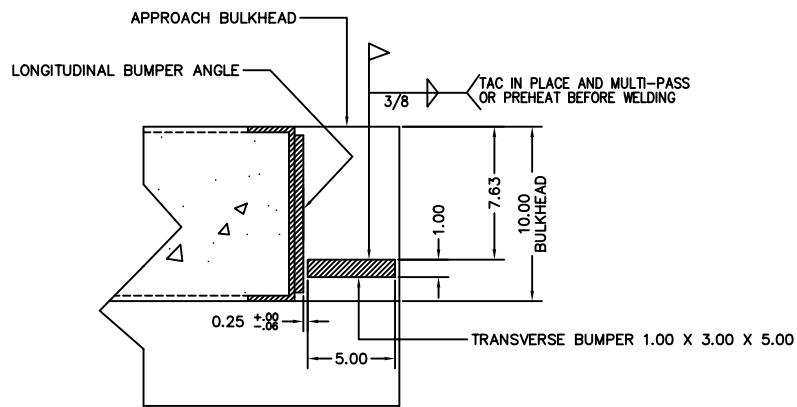
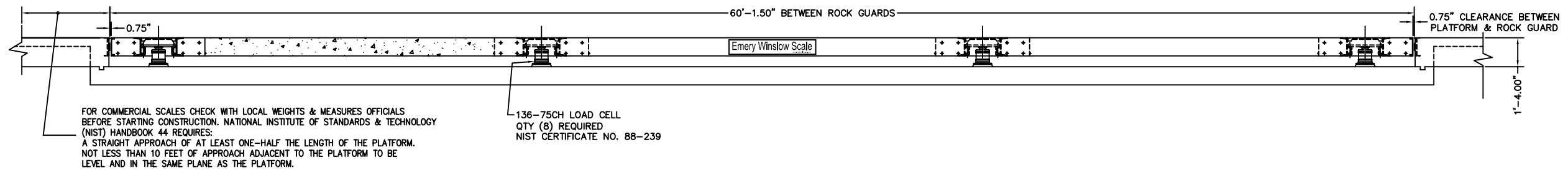
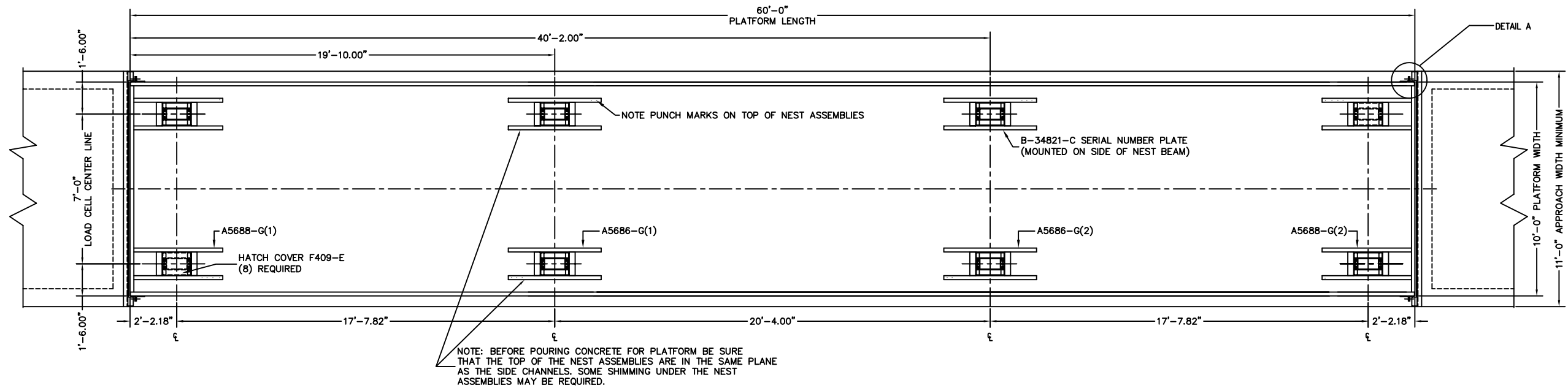
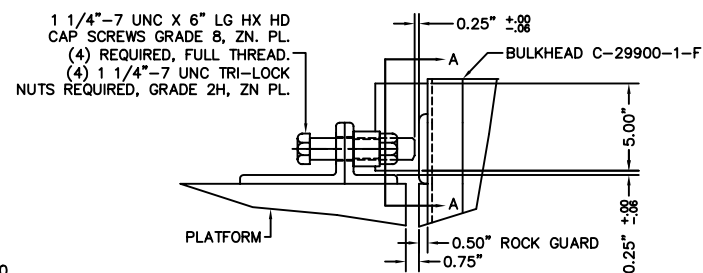


PRELIMINARY NOT FOR CONSTRUCTION

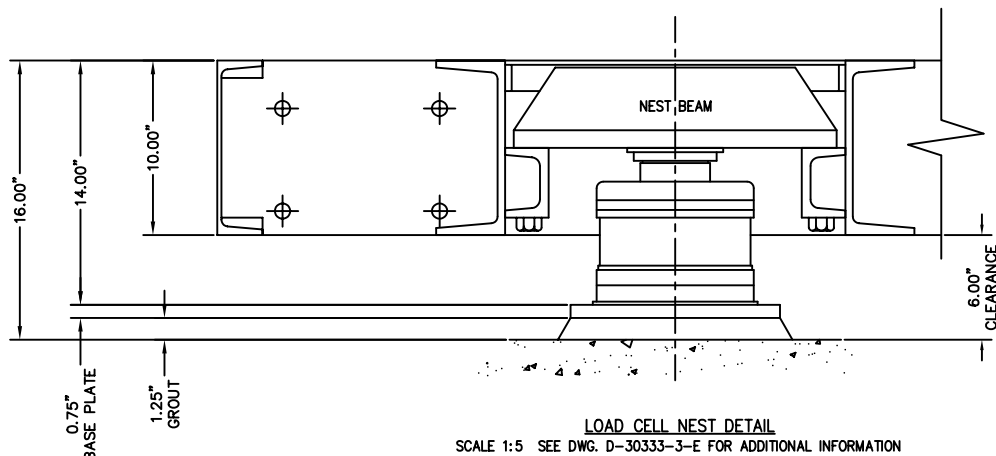


SECTION A-A FROM DETAIL A  
SCALE 1:5 ROTATED 90°  
STRIKERPLATE & CHECK BOLT NOT SHOWN. TYPICAL AT FOUR CORNERS.



DETAIL A  
SCALE 1:5

- NOTES:
- A3995-D SLAB FOUNDATION
  - A3164-5-D FOOTING FOUNDATION
  - A6418-1/13 SCALE PLATFORM ASSY. & INSTAL INSTR.
  - D-30333-3-E NEST ASSEMBLY DETAIL
  - B-29932-C ANCHOR BOLT INSTALLATION
  - F987-D LOAD CELL INSTALLATION & ALIGNMENT
  - B-30740-4 HYDRAULIC JACK POSITIONS & SEQUENCES
  - B-33069-G TUBING DIAGRAM
  - B-30752-4 TARE PRESSURE & GAUGING REPORT
  - SERIES 9000 INSTRUCTION MANUAL
  - NTEP #89-014P
  - CLC = 58,000 LB
1. CONCRETE REQUIRED TO POUR PLATFORM IS 18 CUBIC YARDS. (MINIMUM CONCRETE STRENGTH IS 5,000 PSI AT 28 DAYS.)



REVISION	DATE	BY	DESCRIPTION
H	07/05	CEM	REVISION UPDATES
G	06/04	CEM	REVISION UPDATES
F	03/02	CES	DETAIL A WAS DETAIL X
E	11/00	CES	OVERALL SCALE CORRECTED: 1:30 WAS N.T.S.
D	3/00	CES	PUNCHMARKS CORRECTED
C	3/00	CES	BULKHEAD REVISED
B	7/98	CES	DIM CORRECTED TO SCALE
A	7/98	CES	DIM CORRECTED
LTR			REVISION

ALL SHARP CORNERS AND EDGES TO BE BROKEN

UNLESS OTHERWISE SPECIFIED DIMENSIONS ARE IN INCHES

MACHINING FABRICATION

±.00

±.13

±.005

±.005

DATE 2/10/97

CHECKED DATE

ACAD FILENAME: A3163-5

LAYERS USED: ALL

FULL SIZE PLOT D-24X36	
EMERY WINSLOW SCALE COMPANY	
SEYMOUR, CT	TERRE HAUTE, IN.
ASSEMBLY LAYOUT	
MODEL 94-10060 60' X 10'	
10" CONCRETE DECK	
SCALE	FIRST USED ON DRAWING NO.
1:30	A3163-5
REV.	H