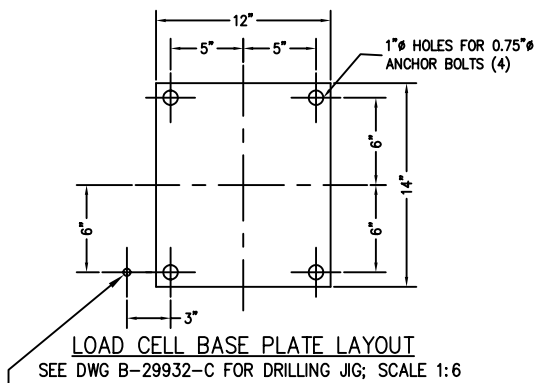
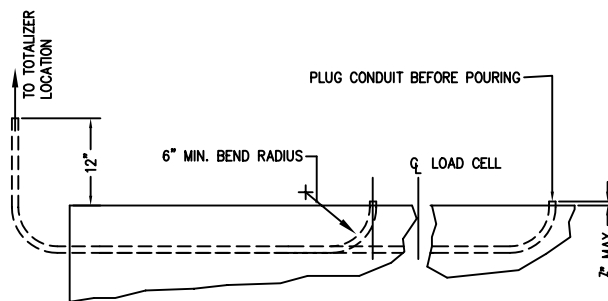
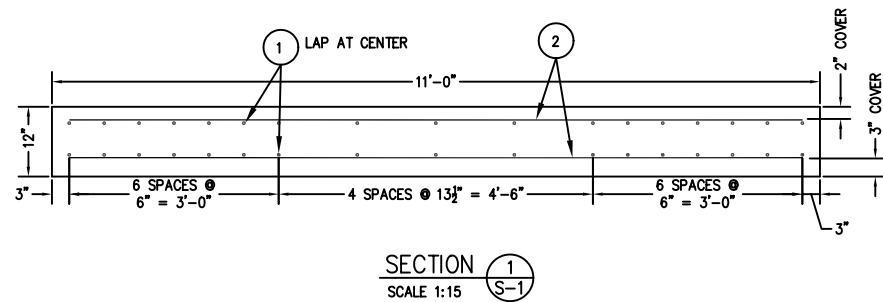
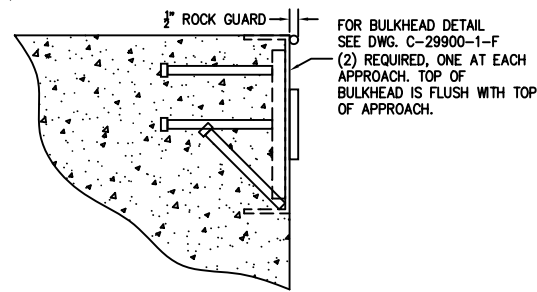
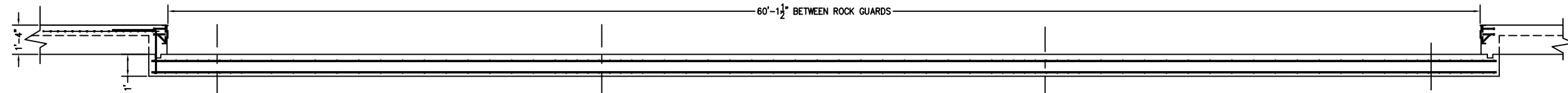
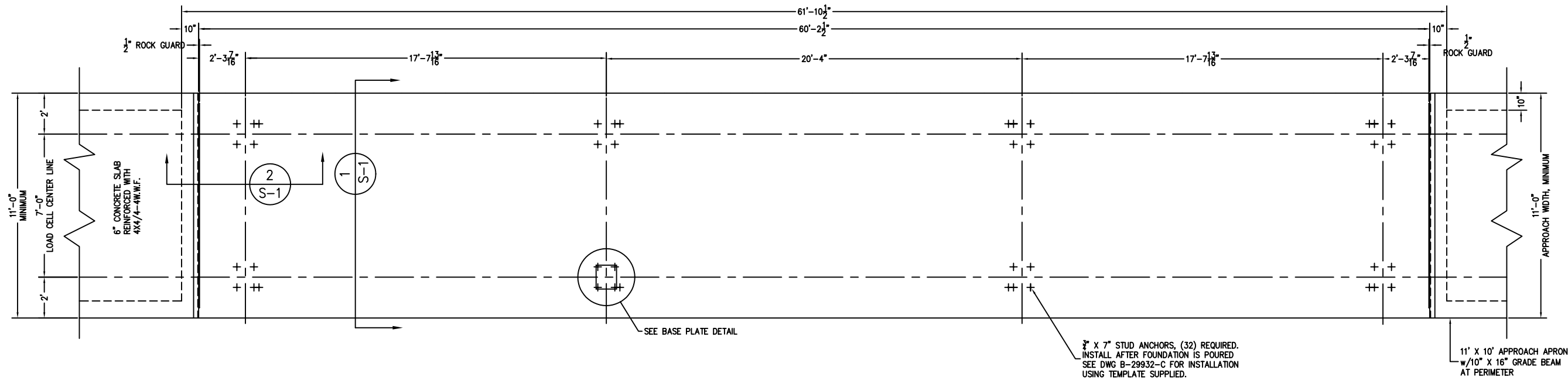
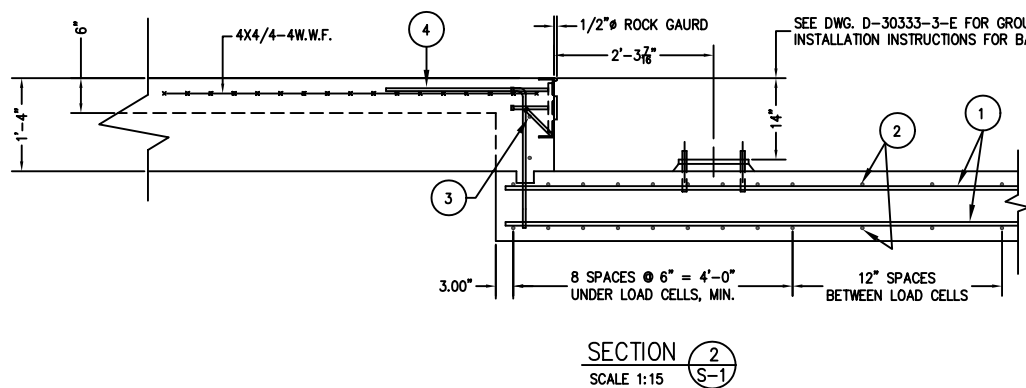


PRELIMINARY NOT FOR CONSTRUCTION



- FOR NON COMMERCIAL SCALES PROVIDE AN APPROACH OF 2 FEET MINIMUM LENGTH WHICH IS LEVEL AND IN SAME PLANE AS THE PLATFORM.
- FOR COMMERCIAL SCALES CHECK WITH LOCAL WEIGHTS AND MEASURES OFFICIALS BEFORE STARTING CONSTRUCTIONS. NATIONAL INSTITUTE OF STANDARDS AND TECHNOLOGY (NIST) HANDBOOK 44 REQUIRES:
- A STRAIGHT APPROACH OF AT LEAST ONE-HALF THE LENGTH OF THE PLATFORM.
 - NOT LESS THAN 10 FEET OF APPROACH ADJACENT TO THE PLATFORM TO BE CONSTRUCTED OF CONCRETE OR SIMILAR DURABLE MATERIAL AND BE LEVEL AND IN THE SAME PLANE AS THE PLATFORM.
- NOTES:
- CONCRETE STRENGTH: 4,000 PSI @ 28 DAYS
 - REINFORCING ROD: GRADE 60, 60,000 PSI, ASTM 615
 - SOIL BEARING IS ASSUMED TO BE 2,000 LBS/SQ FT. TO BE VERIFIED IN THE FIELD.
 - SLAB TO BE FLAT WITHIN 1/4" & LEVEL WITHIN 1/8" PER 10 FT.
 - APPROACH COPING(BULKHEAD) TO BE ON A COMMON PLANE WITHIN 1/4".
 - TOP OF REBAR MUST BE PLACED TO CLEAR THE ANCHOR BOLTS. ANCHOR BOLTS ARE TO BE INSTALLED AFTER FOUNDATION HAS CURED.
 - SEE SPEC. A499-364-2 FOR ON SITE SUBSURFACE CONDITIONS.
 - THE LENGTH FOR REBAR NO. 1 IS MINIMUM FOR 68 PIECES LAPPED. LONGER LAPS AND/OR PIECES MAY BE USED. MINIMUM LAP IS 26".
- REFERENCE DRAWINGS:
- A3163-5-H OUTLINE ARRANGEMENT
 - B-29932-C ANCHOR BOLT INSTALLATION
 - C-29900-1-F BULKHEAD DETAIL



MATERIAL REQUIREMENTS		TOTAL WT. OF REBAR		4131
CONCRETE:		4	4'-0"	53
APPROACHES	6 CU. YDS	3	10'-6"	44
FOUNDATION	26 CU. YDS	2	10'-6"	1708
REINFORCING:		1	31'-10" (26" MINIMUM OVERLAP)	2251
REBAR	4042 LB	PIECE NO.	QTY	BAR SIZE
4X4/4-4W.W.F.	220 SQ FT			LENGTH & DESCRIPTION
				WT.

REV	DATE	BY	DESCRIPTION
D	07/05	CEM	FRACTIONAL IN'S WERE DEC., NOTE 7 ADDED
C	05/02	CEM	BULKHEAD DETAIL ADDED
B	11/00	CEM	TEXT STYLE, OVERALL SCALE & REV. UPDATED
A	3/00	CEM	BULKHEAD REVISED
LTR			REVISION

ALL SHARP CORNERS AND EDGES TO BE BROKEN		EMERY WINSLOW SCALE COMPANY	
UNLESS OTHERWISE SPECIFIED DIMENSIONS ARE IN INCHES		SEYMOUR, CT U.S.A. TERRE HAUTE, IN.	
MACHINING FABRICATION		FOUNDATION PLAN 60' X 10'	
±.13		MODEL 94-10060	
DRAWN JP DATE 8/7/96		SLAB CONSTRUCTION	
CHECKED DATE	ACAD FILENAME: A3995	SCALE FIRST USED ON DRAWING NO.	REV.
LAYERS USED: ALL		1:30 A-3920	A3995 D

FULL SIZE PLOT D-24X36