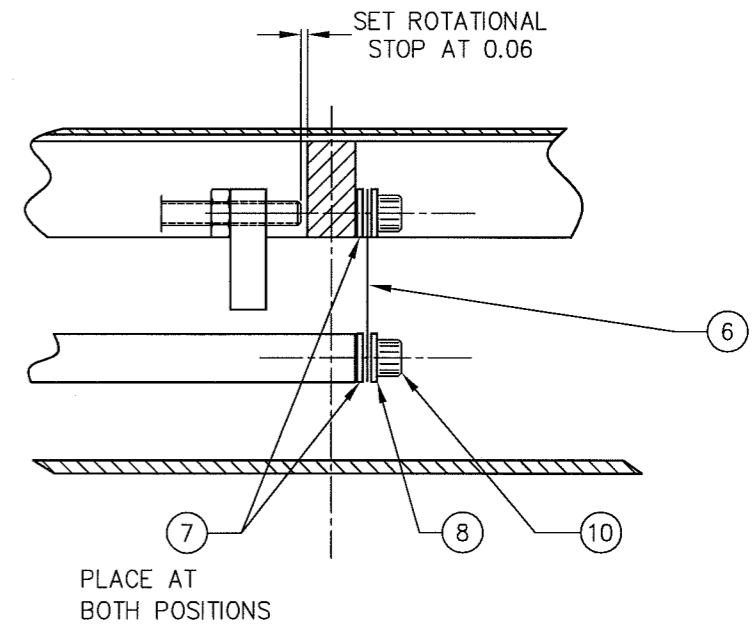
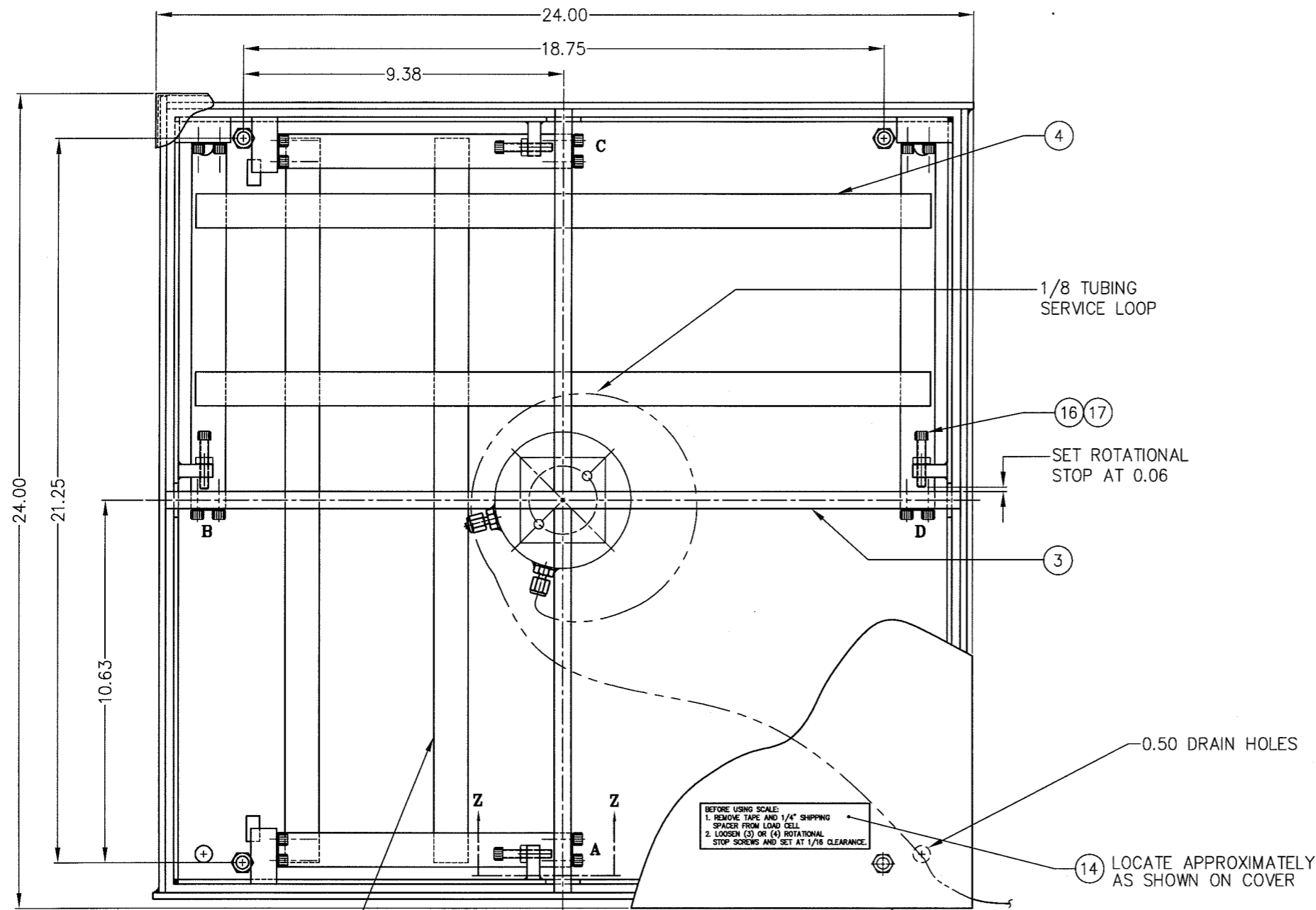
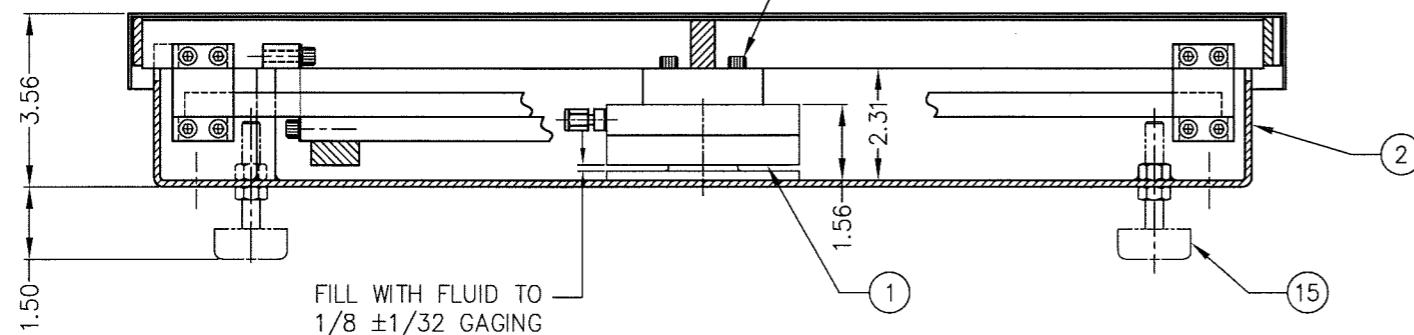


SCALE CAPACITY (lb)	LOAD CELL	(ITEM 14)	WHEN SPECIFIED FOOT (ITEM 15)	ITEM NO.	DESCRIPTION	QTY	MATERIAL	UNIT WT.	PART NO.	SIZE	WT.
100 X 0.02	102SD-0.2	0.691 IN SQ (B-35307)	A-34073-2	1	LOAD CELL	1	SS/D		SEE TABLE		
				2	BASE PAN WELDMENT	1	SS304		B-33686		
				3	TOP FRAME WELDMENT	1	SS304		B-33681		
150/200 X 0.05	102SD-0.2	1.00 IN SQ (B-35285)	A-34073-2	4	TORQUE ARM, LONG	1	SS304		B-33679		
				5	TORQUE ARM, SHORT	1	SS304		B-33678		
				6	FLEXURE	8	SS302		A-33218-2	0.020 THK	
				7	SHIM	A/R	SS302		A-33339-1	0.007 THK	
				8	CLAMP	16	SS304		A-33383		
				9	COVER	1	SS304		B-28114-18		
				10	SCREW SOCKET HD	32	SS304		0.250-28 UNF X 0.38		
				11	SCREW SOCKET HD	2	SS304		0.250-20 UNC X 1.25		
				12							
				13	WASHER, FLAT	2	SS304		0.250		
				14	LABEL	1			A-33585		
				15	FOOT	4			A-34073-2		
				16	HHCS	4	SS304		0.312-18 UNC X 1.50		
				17	HEX NUT	4	SS304		0.312-18 UNC		



FOR CORNER CALIBRATION, SHIM ENDS **A, B, C, or D.** ADD SHIMS TO THE LOW WEIGHT READING SIDE(S) BETWEEN FLEXURE AND MOUNTING SURFACE.

**SECTION Z-Z**



				ALL SHARP CORNERS AND EDGES TO BE BROKEN		EMERY WINSLOW SCALE COMPANY SEYMOUR, CT U.S.A. TERRE HAUTE, IN.	
C	ITEMS 16 & 17 ADDED, DRAWING UPDATED	6/4/02	CBM	DIMENSIONS ARE IN INCHES. TOLERANCES UNLESS SPECIFIED OTHERWISE:		BENCH SCALE ASSEMBLY 437-2424-300	
B	CAD REDRAWN, WAS 1/2" SIZE LOAD CELL TABLE MODIFIED	11/6/01	CBM	MACHINING: ±.005 FABRICATION: ±.13			
REV	DESCRIPTION	DATE	BY	DRAWN: <i>CBM</i> DATE: 11/6/01		SCALE: 1:4 FIRST USED ON: DRAWING NO. B-33690 REV C	
				CHECKED: <i>CBM</i> DATE: _____ ACAD FILE NAME: ACD0883 LAYERS USED: 05,16			
THIS DRAWING IS THE PROPERTY OF EMERY WINSLOW SCALE COMPANY SEYMOUR, CONNECTICUT. THE INFORMATION CONTAINED HEREIN IS CONFIDENTIAL AND IS NOT TO BE USED OR DISSEMINATED TO OTHERS WITHOUT THE EXPRESS WRITTEN CONSENT OF EMERY WINSLOW SCALE COMPANY.							