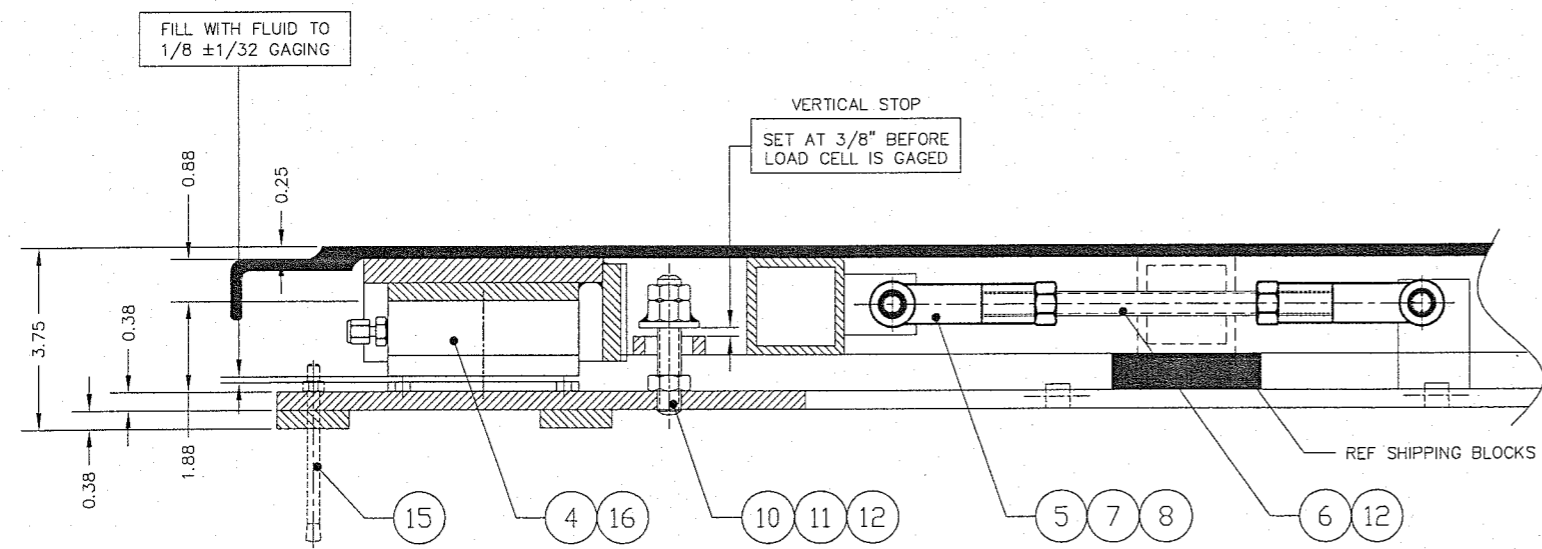
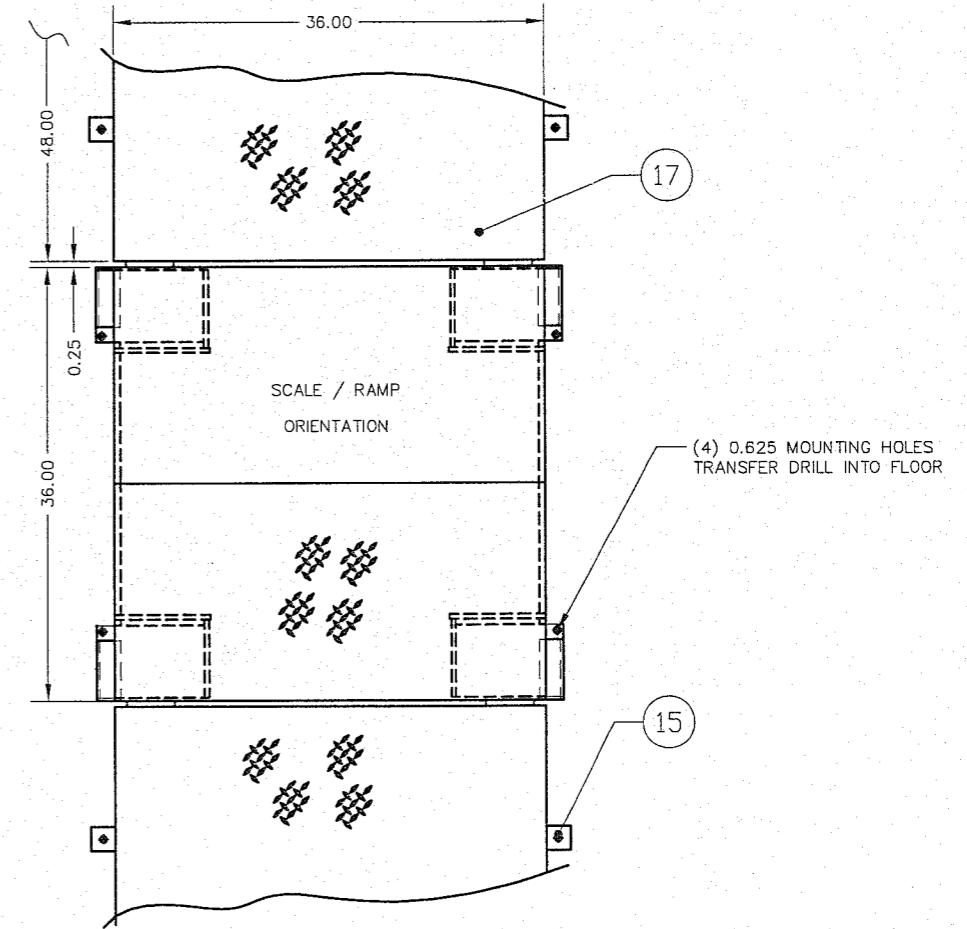
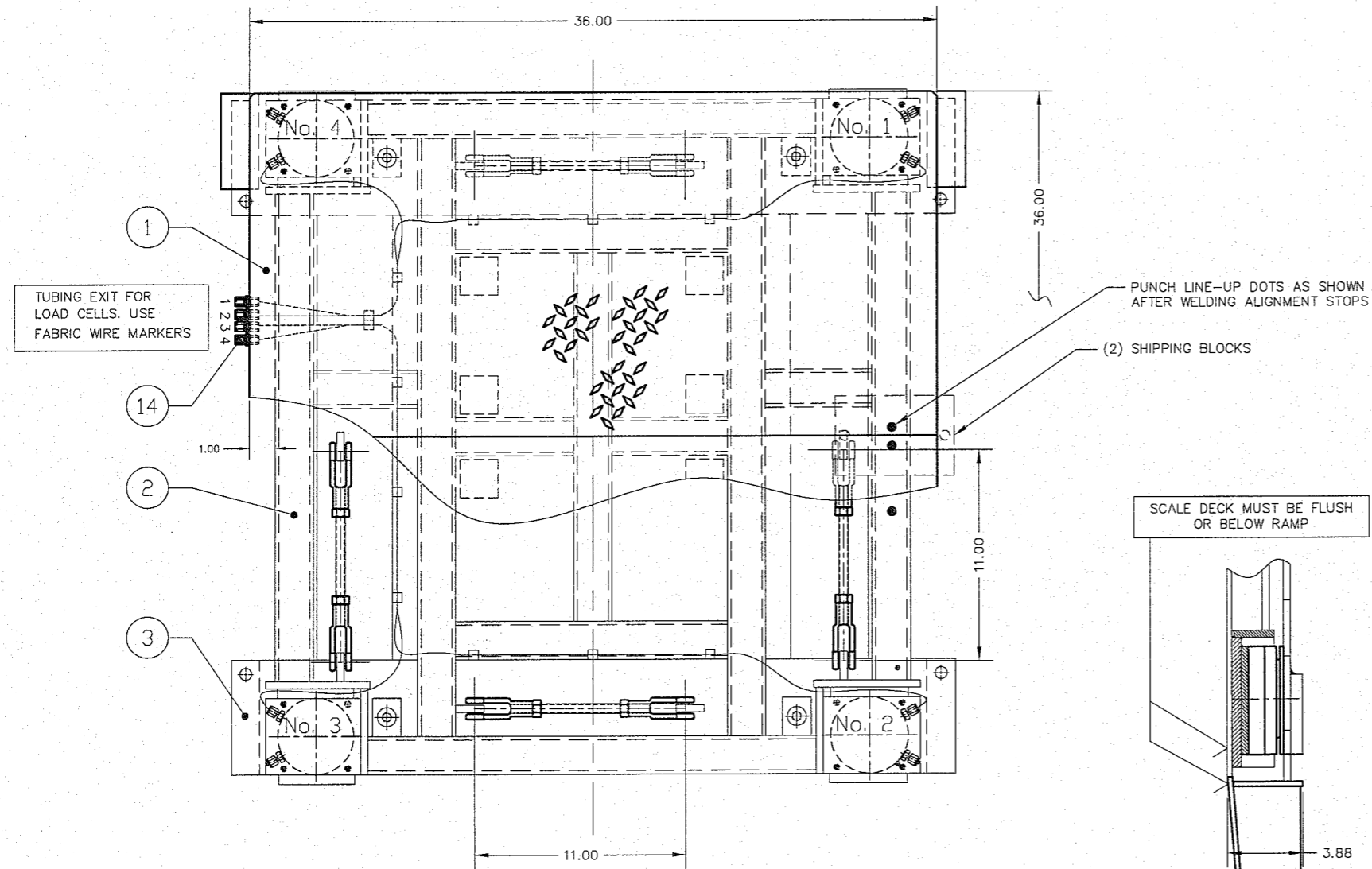


ITEM NO.	DESCRIPTION	QTY	MATERIAL	UNIT WT.	PART NO.	SIZE	WT.
1	REMOVABLE DECK SET	2	SS 304	50	B-35874	(4 WAY SAFETY PLATE - OPTIONAL)	101
2	DECK WELDMENT	1	SS 304		D-35873		92
3	BASE WELDMENT	1	SS 304		D-35836		77
4	LOAD CELL	4	SS 304		B-34326-2	102S-03.5-M1	
5	ROD CLEWS	8	SS 304		2806SS	0.500-20 UNF	MIDWEST CONTROL PRODUCTS CORP.
6	STAYBAR	4	SS 304		A-35900-1	0.500-20 UNF X 8.75	
7	CLEWS PIN	8	SS 303		92390A382	0.50 DIA X 1.19 GRIP LENGTH	McMASTER CARR
8	HAIR PIN COTTER	8	SS 304		92391A130	0.25 - 0.38 SHAFT 1.18 OL.	McMASTER CARR
9							
10	VERTICAL STOP THRO ROD	4	SS 304			0.500-20 UNF X 2.75	
11	VS HEX NUT WELDMENT	4	SS 304		A-35703		
12	HEX NUT, HALF	16	SS 304			0.500-20 UNF	
13							
14	UNION	4	SS 316		SS-200-6		SWAGelok OR EQUAL
15	ANCHOR BOLT 0.50 X 4.50	4 + A/R	SS 304		KB11304SS12-412		HILTI OR EQUAL
16	HHCS	8	SS			0.250-20 UNC X 0.50	
17	RAMP	A/R	SS 304		B-35735		



- NOTES:
- CAUTION: WHEN USING FORK LIFT TO MOVE SCALE ADD SHIPPING BLOCKS AS SHOWN.
 - SEE PRODUCTION CONTROL DRAWING D-35654.
 - AXLE LOAD 2000 lb
 - FINISH: WHITE SAND BLAST TO (125 MIC).

B DRAWING UPDATED TO NEW STAYBAR ARRANGEMENT		10/6/05	CBM	ALL SHARP CORNERS AND EDGES TO BE BROKEN	EMERY WINSLOW SCALE COMPANY SEYMOUR, CT U.S.A. TERRE HAUTE, IN.
A NOTES, DRAWING UPDATED		4/12/04	CBM		
REV	DESCRIPTION	DATE	BY	DIMENSIONS ARE IN INCHES. TOLERANCES UNLESS SPECIFIED OTHERWISE: MACHINING .XX ± .01 .XXX ± .005	SCALE ASSEMBLY 708-33-5 WITH 2-PIECE REMOVABLE DECK
				DRAWN: CBM DATE: 9/22/03	
THIS DRAWING IS THE PROPERTY OF EMERY WINSLOW SCALE COMPANY SEYMOUR, CONNECTICUT. THE INFORMATION CONTAINED HEREIN IS CONFIDENTIAL AND IS NOT TO BE USED OR DISSEMINATED TO OTHERS WITHOUT THE EXPRESS WRITTEN CONSENT OF EMERY WINSLOW SCALE COMPANY.				CHECKED: DATE: ACAD FILENAME: ACO1098 LAYERS USED: LO - L6	SCALE 1:4 FIRST USED ON DRAWING NO. D-35872 REV B